

STATE OF TEXAS)
COUNTY OF HARRIS)

We, Vincent D. Kickerillo and Naomi Jones, President and Secretary of Nottingham Development Company, owner of the above and foregoing map of Nottingham Forest, Se said property and on behalf of said Nottingham Development Company, according to the lines, lots, alleys, parks, building lines, and easements thereon shown and designate said subdivision as shown in the William Hardin Survey (1-24), Harris County, Texas, and on behalf of said Nottingham Development Company; and dedicate to public use, as such, the streets, alleys, parks, and easements sho for damages occasioned by the establishing of grades as approved for the streets and alleys dedicated, or occasioned by the alteration of any portion of streets or alle hereby bind ourselves, our successors and assigns to warrant and forever defend the title to the land so dedicated.

This is to certify that we, American Bank & Trust Company, owner and holder of a lien against the above described property, said lien being evidenced by an instrument of record in Volume 574 of the Records of Harris County, Texas, do hereby in all things subordinate to said subdivision and dedication said lien, and we hereby confirm that we are the present owner of said lien and have not an

There is also dedicated for utilities an unobstructed aerial easement five (5) feet wide from a plane twenty (20) feet upward, located adjacent to all easements shown hereon. We hereby covenants and warrant to Harris County and/or any property owner that the building lines, utility easement and street right-of-way shown in adjacent acreage are hereby established as shown.

We hereby covenant and agree with the City of Houston and/or Harris County that lots backing or abutting on Dairy-Ashford Road shall not have direct driveway access to said road.

IN TESTIMONY WHEREOF, the Nottingham Development Company has caused these presents to be signed by Vincent D. Kickerillo, its President, thereunto authorized, attested, by its Secretary, Nae

STATE OF TEXAS }
COUNTY OF HARRIS }

EXHIBIT 12, the undersigned authority, on this day personally appeared Vincent D. Kickerillo, President, and Naomi Jones, Secretary of the Pettigham Development Company, known to me to be the persons whose names are subscribed to the foregoing instrument, and acknowledged to me that they executed the same for the purposes and considerations therein expressed, and in the capacity therein and herein set out, and as the act and deed of said corporation.

GIVEN UNDER MY HAND AND SEAL OF OFFICE, this 17th day of February, 1966.

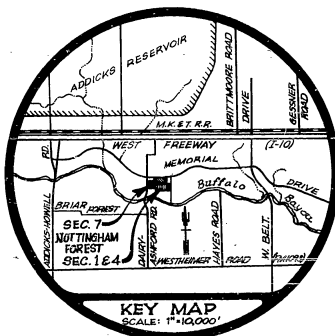
Notary Public in and for Harris County, Texas.

STATE OF TEXAS)
COUNTY OF HARRIS)

BEFORE ME, the undersigned authority on this day personally appeared D. E. Vasey, President, and B. E. Hunter, Vice-President and Cashier of the American Bank & Trust Company, known to me to be the persons whose names are subscribed to the foregoing instrument, and acknowledged to me that they executed the same for the purposes and considerations therein expressed, and in the capacity therein and herein set out, and as the act and deed of said corporation.

GIVEN UNDER MY HAND AND SEAL OF OFFICE, this 21st day of September, 1966.

Kenny C. Munk
Notary Public in and for Harris County, Texas.



MAP RECORDS OF
HARRIS COUNTY, TEXAS
VOL. 138 PAGE 2
R. E. TURRENTINE, JR.,
COUNTY CLERK
HARRIS COUNTY, TEXAS
NOTTINGHAM FOREST, SEC. 7
THIS IS 1 OF 5 PAGES

NOTES:

1. "U.E." indicates Utility Easement.
2. "G.E." indicates a Gay Easement.
3. "B.L." indicates Building Line.
4. All 10-foot utility easements extend five feet on either side of a common lot line unless otherwise noted.
5. All side lot lines are either perpendicular to street frontage unless otherwise noted.

NOTTINGHAM FOREST
SECTION 7
SUBDIVISION OF 33.3365 ACRES OF LAND
WILLIAM HARDIN SURVEY (A-24)
HARRIS COUNTY, TEXAS
8 BLOCKS - 133 LOTS

KICKERILLO DEVELOPMENT COMPANY
VINCENT D. KICKERILLO - PRESIDENT

TELLER & PEPE
CONSULTING ENGINEERS
HOUSTON, TEXAS FEBRUARY 1966

SCALE: 1" = 100'

STATE OF TEXAS)
COUNTY OF HARRIS)

I, E. E. Turrentine, Jr., Clerk of the County Court of Harris
the within instrument with its certificate of authentication was fi
March 10 1966, at 11:37 o'clock, A.M., and duly r
1966, at 3:30 o'clock, P.M., Volume 133 Page 1

WITNESS my hand and seal of office, at Houston, the day and da

THIS CERTIFICATE IS VALID ONLY AS TO THE INSTRUMENT ON WHICH THE ORIGINAL SIGNATURE IS AFFIXED AND ONLY TIES TO THE EXTENT THAT SUCH INSTRUMENT IS NOT ALTERED OR COUNTERFEITED AFTER RECORDING.

MATCH LINE

SEE PAGE 5

SEE PAGE 4

1. **PLATE 1**
 2. **PLATE 2**
 3. **PLATE 3**
 4. **PLATE 4**
 5. **PLATE 5**
 6. **PLATE 6**
 7. **PLATE 7**
 8. **PLATE 8**
 9. **PLATE 9**
 10. **PLATE 10**
 11. **PLATE 11**
 12. **PLATE 12**
 13. **PLATE 13**
 14. **PLATE 14**
 15. **PLATE 15**
 16. **PLATE 16**
 17. **PLATE 17**
 18. **PLATE 18**
 19. **PLATE 19**
 20. **PLATE 20**
 21. **PLATE 21**
 22. **PLATE 22**
 23. **PLATE 23**
 24. **PLATE 24**
 25. **PLATE 25**
 26. **PLATE 26**
 27. **PLATE 27**
 28. **PLATE 28**
 29. **PLATE 29**
 30. **PLATE 30**
 31. **PLATE 31**
 32. **PLATE 32**
 33. **PLATE 33**
 34. **PLATE 34**
 35. **PLATE 35**
 36. **PLATE 36**
 37. **PLATE 37**
 38. **PLATE 38**
 39. **PLATE 39**
 40. **PLATE 40**
 41. **PLATE 41**
 42. **PLATE 42**
 43. **PLATE 43**
 44. **PLATE 44**
 45. **PLATE 45**
 46. **PLATE 46**
 47. **PLATE 47**
 48. **PLATE 48**
 49. **PLATE 49**
 50. **PLATE 50**
 51. **PLATE 51**
 52. **PLATE 52**
 53. **PLATE 53**
 54. **PLATE 54**
 55. **PLATE 55**
 56. **PLATE 56**
 57. **PLATE 57**
 58. **PLATE 58**
 59. **PLATE 59**
 60. **PLATE 60**
 61. **PLATE 61**
 62. **PLATE 62**
 63. **PLATE 63**
 64. **PLATE 64**
 65. **PLATE 65**
 66. **PLATE 66**
 67. **PLATE 67**
 68. **PLATE 68**
 69. **PLATE 69**
 70. **PLATE 70**
 71. **PLATE 71**
 72. **PLATE 72**
 73. **PLATE 73**
 74. **PLATE 74**
 75. **PLATE 75**
 76. **PLATE 76**
 77. **PLATE 77**
 78. **PLATE 78**
 79. **PLATE 79**
 80. **PLATE 80**
 81. **PLATE 81**
 82. **PLATE 82**
 83. **PLATE 83**
 84. **PLATE 84**
 85. **PLATE 85**
 86. **PLATE 86**
 87. **PLATE 87**
 88. **PLATE 88**
 89. **PLATE 89**
 90. **PLATE 90**
 91. **PLATE 91**
 92. **PLATE 92**
 93. **PLATE 93**
 94. **PLATE 94**
 95. **PLATE 95**
 96. **PLATE 96**
 97. **PLATE 97**
 98. **PLATE 98**
 99. **PLATE 99**
 100. **PLATE 100**

ACREAGE

NOTE: LOTS BACKING OR SIDING ON DAIRY-ASHFORD ROAD SHALL NOT HAVE DIRECT DRIVEWAY ACCESS TO SAID ROAD (SEE DEDICATION)

20' DEDICATED IN FEE FOR ADDITIONAL DAIRY-ASHFORD ROAD RIGHT-OF-WAY

MAR 10 11 37 AM 1968

NOTTINGHAM FOREST

[illegible]

This is to certify that the City Planning Commission of the City of Houston, Texas, has approved the subdivision of Nottingham Forest, Section 7 as shown hereon.

In testimony whereof, witness the official signature of the Chairman of the City Planning Commission of the City of Houston, Texas, this 24th day of March, 1966, at 10 o'clock, P.M., Volume 133, page 1 of 5.

Ross H. Gage
Secretary

SEE PAGE 3

STATE OF TEXAS
COUNTY OF HARRIS

I, R. E. Turrentine, Jr., Clerk of the County Court of Harris County, Texas, do hereby certify that the within instrument with its certificate of authentication was filed for record in the County Clerk's Office, at 10 o'clock, P.M., and duly recorded on March 10, 1966, at 3:30 o'clock, P.M., Volume 133, page 1 of 5.

WITNESS my hand and seal of office, at Houston, the day and date last aforesaid.

R. E. Turrentine, Jr.
Clerk, County Court of Harris County, Texas

THIS CERTIFICATE IS VALID ONLY AS TO THE RECORDING OF THIS INSTRUMENT. IT DOES NOT GUARANTEE THE ORIGINAL SIGNATURE OR THE CONTENTS OF THE INSTRUMENT. SUCH INSTRUMENT IS NOT ALTERED BY THIS CERTIFICATE AFTER RECORDING.

SEE PAGE 5

SEE PAGE 2

NOTES:

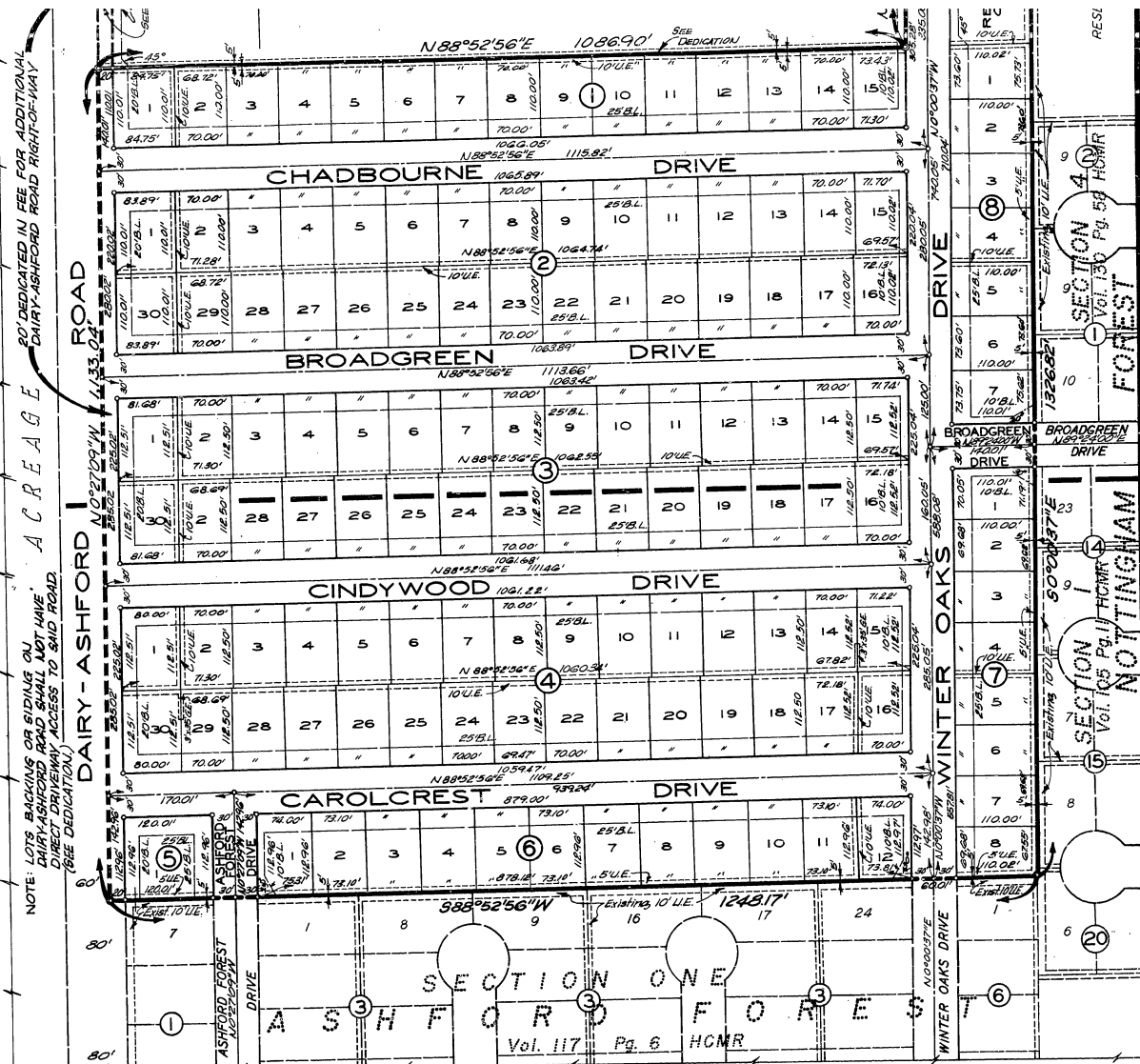
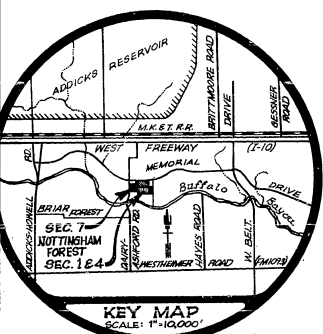
1. "U.L." indicates Utility Easement.
2. "C.L." indicates City easement.
3. "B.L." indicates Building Line.
4. All 10-foot utility easements extend five feet on either side of a common lot line unless otherwise noted.
5. All side lot lines are either perpendicular to street frontage unless otherwise noted.

NOTTINGHAM FOREST **SECTION 7** SUBDIVISION OF 33.3365 ACRES OF LAND WILLIAM HARDIN SURVEY (A-24) HARRIS COUNTY, TEXAS 8 BLOCKS - 133 LOTS

KICKERILLO DEVELOPMENT COMPANY
VINCENT D. KICKERILLO - PRESIDENT

TELLER & PEPE
CONSULTING ENGINEERS
HOUSTON, TEXAS FEBRUARY 1966

SCALE: 1" = 100'



MAP RECORDS OF
HARRIS COUNTY, TEXAS
VOL. 133, PAGE 1
R. E. TURRENTINE, JR.,
COUNTY CLERK
HARRIS COUNTY, TEXAS
NOTTINGHAM FOREST, SEC. 7
THIS IS 1 OF 5 PAGES

This is to certify that the City Planning Commission of the City of Houston, Texas, has approved this plat and subdivision of Nottingham Forest, Section 7 as shown hereon.

IN TESTIMONY WHEREOF, witness the official signature of the Chairman and Secretary of the City Planning Commission of the City of Houston, Texas, this 5th day of March 1966.

Robert H. Agnes
Chairman

Robert H. Agnes
Secretary

SEE PAGE 2

SEE PAGE 3

NOTES:

1. "U.B." indicates Utility Easement.
2. "G.S." indicates Gas Easement.
3. "P.L." indicates Building Line.
4. All 10-foot utility easements extend five feet on either side of a common lot line unless otherwise noted.
5. All side lot lines are either perpendicular to street frontage unless otherwise noted.

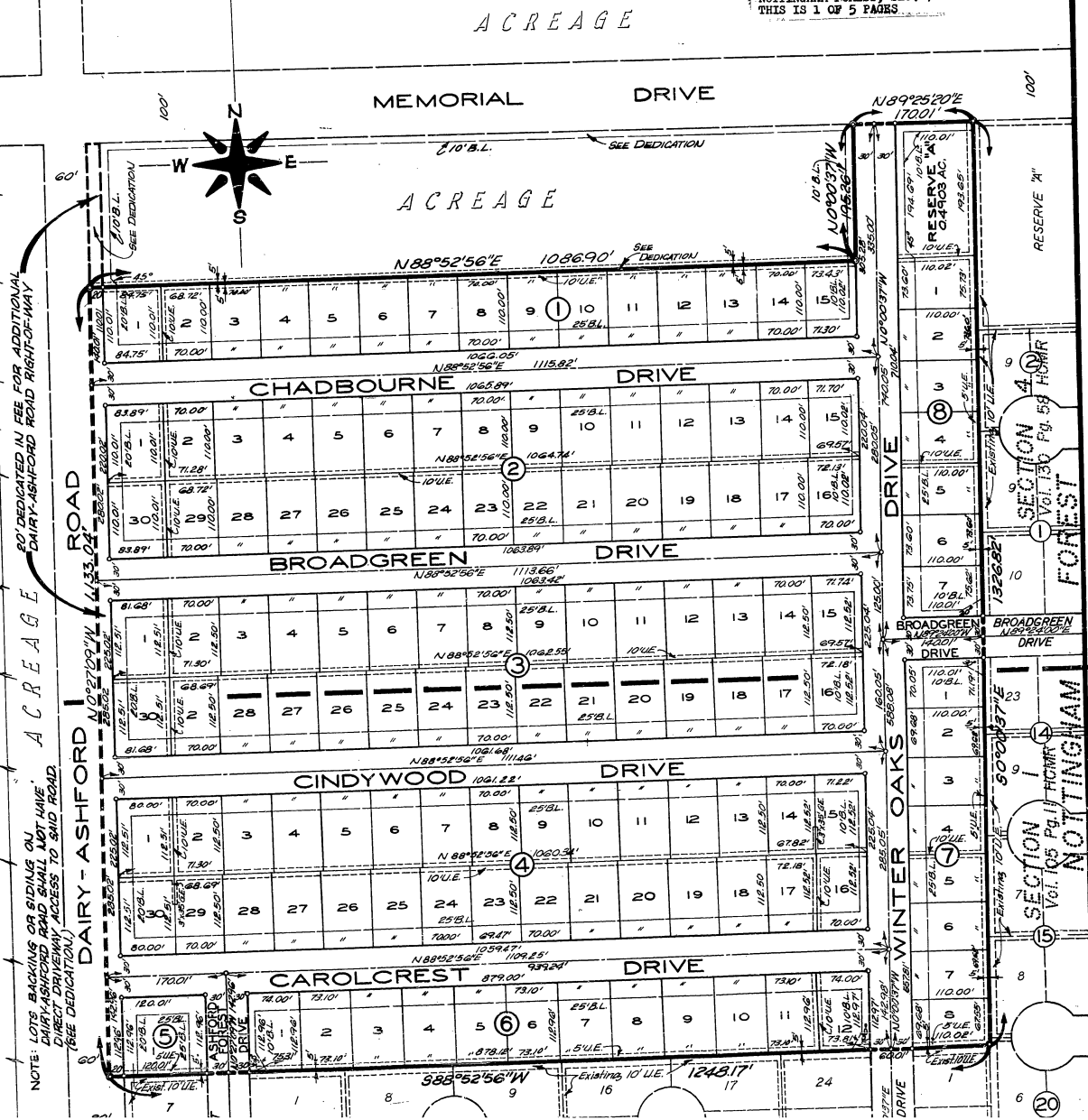
STATES OF TEXAS
COUNTY OF HARRIS

I, R. E. Turrentine, Jr., Clerk of the County Court of Harris County, Texas, do hereby certify that the within instrument with its certificate of authentication was filed for registration in my office on March 16, 1966, at 11:31 o'clock, A.M., and duly recorded on March 14, 1966, at 3:30 o'clock, P.M., Volume 138, page 1, of Record of Maps of Said County.

WITNESS my hand and seal of office, at Houston, the day and date last above written.

R. E. Turrentine, Jr., Clerk, County Court, Harris County, Texas
INSTRUMENT IS VALID ONLY WHEN
RECORDED AND ONLY THEN TO THE EXTENT
THE INSTRUMENT IS NOT ALTERED
AFTER RECORDING.

mauro jo
Deputy



MAP RECORDS OF
HARRIS COUNTY, TEXAS
VOL. 138 PAGE 5
R. E. TURRENTINE, JR.,
COUNTY CLERK
HARRIS COUNTY, TEXAS
NOTTINGHAM FOREST, SEC. 7
THIS IS 1 OF 5 PAGES