

GIVEN UNDER MY HAND AND SEAL OF OFFICE, this 6th day of June, 1965.

STATE OF TEXAS
COUNTY OF HARRIS

NOTARY PUBLIC IN AND FOR HARRIS COUNTY, TEXAS.

SEE PAGE 54

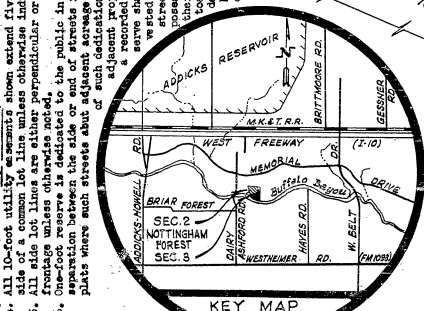
BEFORE ME, the undersigned authority, on this day personally appeared Vice-President, and acknowledged to me that they executed the foregoing instrument, and acknowledged to me that they executed the same for the purposes and considerations therein expressed, and in the capacity therein and herein set out, and as the act and deed of said corporation.

GIVEN UNDER MY HAND AND SEAL OF OFFICE, this day of June, 1965.

NOTARY PUBLIC IN AND FOR HARRIS COUNTY, TEXAS.

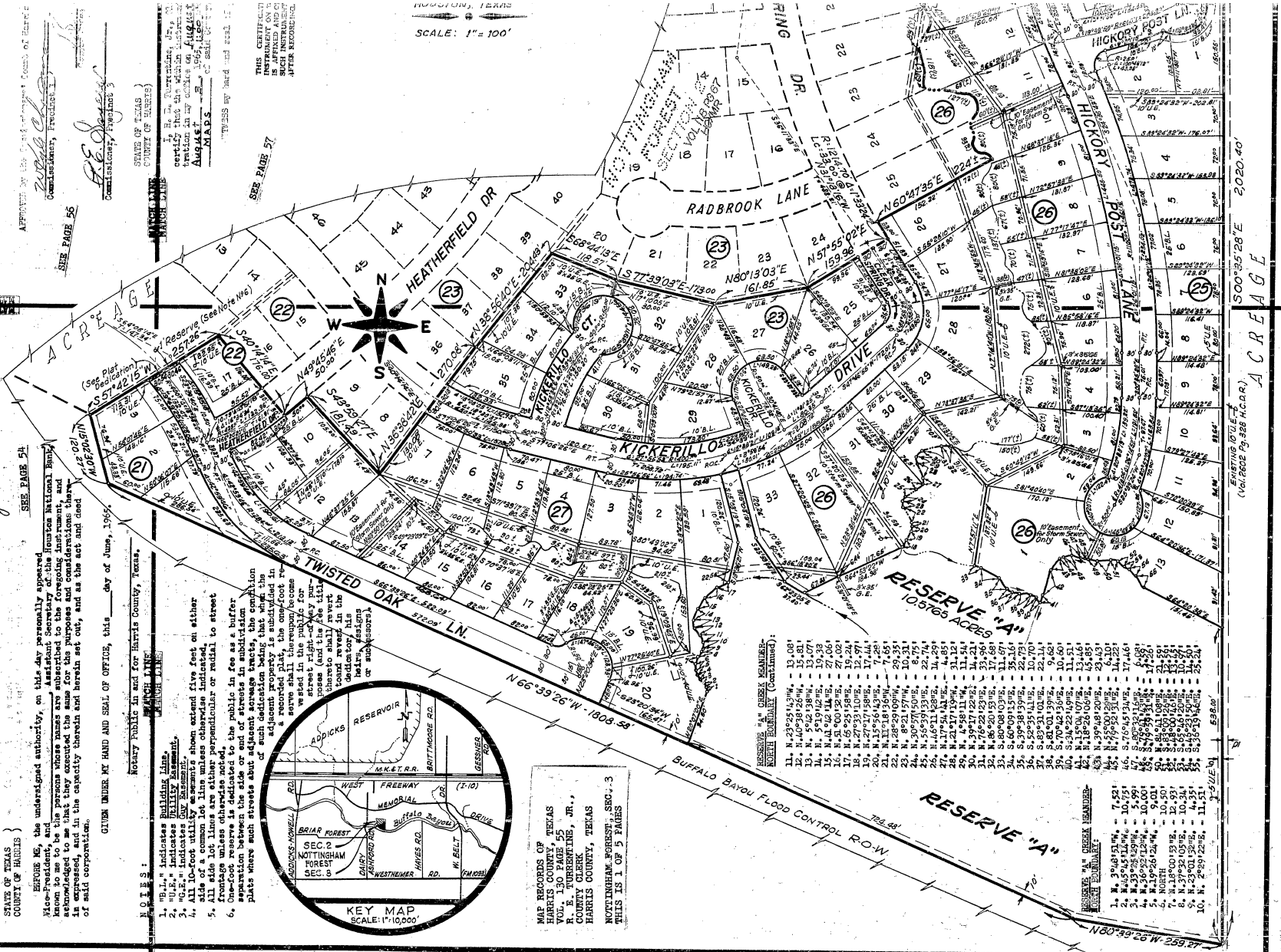
NOTES:
1. "H.L." Indicates Building Line.
2. "H.L." Indicates Building Line.
3. "H.L." Indicates Building Line.
4. All 10-foot utility easements shown extend five feet on either side of a common lot line unless otherwise indicated.
5. All side lot lines are either perpendicular or radial to street.
6. One-foot easement is dedicated to the public in fee as a buffer separation between the side or end of streets in subdivision plat where such streets abut adjacent storage tracts, the condition of such dedication being that when the plat is recorded, the one-foot easement shall thereupon become vested in the public for street right-of-way purposes. The one-foot easement shall revert to the donor or his heirs, assigns or assigns in fee when the plat is recorded.

KEY MAP
SCALE: 1"=10,000'



MAP RECORDS OF
HARRIS COUNTY, TEXAS
VOL. 130 PAGE 55
R. E. TURRENTINE, JR.,
COUNTY CLERK,
HARRIS COUNTY, TEXAS
NOTTINGHAM FOREST, SEC. 3
THIS IS 1 OF 5 PAGES

NOTTINGHAM, TEXAS
SCALE: 1"=100'



RESERVE "A" CREEK MEANDER NORTH BOUNDARY (Continued)

- 1. N. 23° 23' 43" W. - 13.08'
- 2. N. 23° 23' 43" W. - 13.07'
- 3. N. 23° 23' 43" W. - 13.07'
- 4. N. 23° 23' 43" W. - 13.07'
- 5. N. 23° 23' 43" W. - 13.07'
- 6. N. 23° 23' 43" W. - 13.07'
- 7. N. 23° 23' 43" W. - 13.07'
- 8. N. 23° 23' 43" W. - 13.07'
- 9. N. 23° 23' 43" W. - 13.07'
- 10. N. 23° 23' 43" W. - 13.07'
- 11. N. 23° 23' 43" W. - 13.07'
- 12. N. 23° 23' 43" W. - 13.07'
- 13. N. 23° 23' 43" W. - 13.07'
- 14. N. 23° 23' 43" W. - 13.07'
- 15. N. 23° 23' 43" W. - 13.07'
- 16. N. 23° 23' 43" W. - 13.07'
- 17. N. 23° 23' 43" W. - 13.07'
- 18. N. 23° 23' 43" W. - 13.07'
- 19. N. 23° 23' 43" W. - 13.07'
- 20. N. 23° 23' 43" W. - 13.07'
- 21. N. 23° 23' 43" W. - 13.07'
- 22. N. 23° 23' 43" W. - 13.07'
- 23. N. 23° 23' 43" W. - 13.07'
- 24. N. 23° 23' 43" W. - 13.07'
- 25. N. 23° 23' 43" W. - 13.07'
- 26. N. 23° 23' 43" W. - 13.07'
- 27. N. 23° 23' 43" W. - 13.07'
- 28. N. 23° 23' 43" W. - 13.07'
- 29. N. 23° 23' 43" W. - 13.07'
- 30. N. 23° 23' 43" W. - 13.07'
- 31. N. 23° 23' 43" W. - 13.07'
- 32. N. 23° 23' 43" W. - 13.07'
- 33. N. 23° 23' 43" W. - 13.07'
- 34. N. 23° 23' 43" W. - 13.07'
- 35. N. 23° 23' 43" W. - 13.07'
- 36. N. 23° 23' 43" W. - 13.07'
- 37. N. 23° 23' 43" W. - 13.07'
- 38. N. 23° 23' 43" W. - 13.07'
- 39. N. 23° 23' 43" W. - 13.07'
- 40. N. 23° 23' 43" W. - 13.07'
- 41. N. 23° 23' 43" W. - 13.07'
- 42. N. 23° 23' 43" W. - 13.07'
- 43. N. 23° 23' 43" W. - 13.07'
- 44. N. 23° 23' 43" W. - 13.07'
- 45. N. 23° 23' 43" W. - 13.07'
- 46. N. 23° 23' 43" W. - 13.07'
- 47. N. 23° 23' 43" W. - 13.07'
- 48. N. 23° 23' 43" W. - 13.07'
- 49. N. 23° 23' 43" W. - 13.07'
- 50. N. 23° 23' 43" W. - 13.07'
- 51. N. 23° 23' 43" W. - 13.07'
- 52. N. 23° 23' 43" W. - 13.07'
- 53. N. 23° 23' 43" W. - 13.07'
- 54. N. 23° 23' 43" W. - 13.07'
- 55. N. 23° 23' 43" W. - 13.07'
- 56. N. 23° 23' 43" W. - 13.07'
- 57. N. 23° 23' 43" W. - 13.07'
- 58. N. 23° 23' 43" W. - 13.07'
- 59. N. 23° 23' 43" W. - 13.07'
- 60. N. 23° 23' 43" W. - 13.07'
- 61. N. 23° 23' 43" W. - 13.07'
- 62. N. 23° 23' 43" W. - 13.07'
- 63. N. 23° 23' 43" W. - 13.07'
- 64. N. 23° 23' 43" W. - 13.07'
- 65. N. 23° 23' 43" W. - 13.07'
- 66. N. 23° 23' 43" W. - 13.07'
- 67. N. 23° 23' 43" W. - 13.07'
- 68. N. 23° 23' 43" W. - 13.07'
- 69. N. 23° 23' 43" W. - 13.07'
- 70. N. 23° 23' 43" W. - 13.07'
- 71. N. 23° 23' 43" W. - 13.07'
- 72. N. 23° 23' 43" W. - 13.07'
- 73. N. 23° 23' 43" W. - 13.07'
- 74. N. 23° 23' 43" W. - 13.07'
- 75. N. 23° 23' 43" W. - 13.07'
- 76. N. 23° 23' 43" W. - 13.07'
- 77. N. 23° 23' 43" W. - 13.07'
- 78. N. 23° 23' 43" W. - 13.07'
- 79. N. 23° 23' 43" W. - 13.07'
- 80. N. 23° 23' 43" W. - 13.07'
- 81. N. 23° 23' 43" W. - 13.07'
- 82. N. 23° 23' 43" W. - 13.07'
- 83. N. 23° 23' 43" W. - 13.07'
- 84. N. 23° 23' 43" W. - 13.07'
- 85. N. 23° 23' 43" W. - 13.07'
- 86. N. 23° 23' 43" W. - 13.07'
- 87. N. 23° 23' 43" W. - 13.07'
- 88. N. 23° 23' 43" W. - 13.07'
- 89. N. 23° 23' 43" W. - 13.07'
- 90. N. 23° 23' 43" W. - 13.07'
- 91. N. 23° 23' 43" W. - 13.07'
- 92. N. 23° 23' 43" W. - 13.07'
- 93. N. 23° 23' 43" W. - 13.07'
- 94. N. 23° 23' 43" W. - 13.07'
- 95. N. 23° 23' 43" W. - 13.07'
- 96. N. 23° 23' 43" W. - 13.07'
- 97. N. 23° 23' 43" W. - 13.07'
- 98. N. 23° 23' 43" W. - 13.07'
- 99. N. 23° 23' 43" W. - 13.07'
- 100. N. 23° 23' 43" W. - 13.07'

RESERVE "A" CREEK MEANDER NORTH BOUNDARY

- 1. N. 3° 48' 51" W. - 7.52'
- 2. N. 3° 48' 51" W. - 7.52'
- 3. N. 3° 48' 51" W. - 7.52'
- 4. N. 3° 48' 51" W. - 7.52'
- 5. N. 3° 48' 51" W. - 7.52'
- 6. N. 3° 48' 51" W. - 7.52'
- 7. N. 3° 48' 51" W. - 7.52'
- 8. N. 3° 48' 51" W. - 7.52'
- 9. N. 3° 48' 51" W. - 7.52'
- 10. N. 3° 48' 51" W. - 7.52'
- 11. N. 3° 48' 51" W. - 7.52'
- 12. N. 3° 48' 51" W. - 7.52'
- 13. N. 3° 48' 51" W. - 7.52'
- 14. N. 3° 48' 51" W. - 7.52'
- 15. N. 3° 48' 51" W. - 7.52'
- 16. N. 3° 48' 51" W. - 7.52'
- 17. N. 3° 48' 51" W. - 7.52'
- 18. N. 3° 48' 51" W. - 7.52'
- 19. N. 3° 48' 51" W. - 7.52'
- 20. N. 3° 48' 51" W. - 7.52'
- 21. N. 3° 48' 51" W. - 7.52'
- 22. N. 3° 48' 51" W. - 7.52'
- 23. N. 3° 48' 51" W. - 7.52'
- 24. N. 3° 48' 51" W. - 7.52'
- 25. N. 3° 48' 51" W. - 7.52'
- 26. N. 3° 48' 51" W. - 7.52'
- 27. N. 3° 48' 51" W. - 7.52'
- 28. N. 3° 48' 51" W. - 7.52'
- 29. N. 3° 48' 51" W. - 7.52'
- 30. N. 3° 48' 51" W. - 7.52'
- 31. N. 3° 48' 51" W. - 7.52'
- 32. N. 3° 48' 51" W. - 7.52'
- 33. N. 3° 48' 51" W. - 7.52'
- 34. N. 3° 48' 51" W. - 7.52'
- 35. N. 3° 48' 51" W. - 7.52'
- 36. N. 3° 48' 51" W. - 7.52'
- 37. N. 3° 48' 51" W. - 7.52'
- 38. N. 3° 48' 51" W. - 7.52'
- 39. N. 3° 48' 51" W. - 7.52'
- 40. N. 3° 48' 51" W. - 7.52'
- 41. N. 3° 48' 51" W. - 7.52'
- 42. N. 3° 48' 51" W. - 7.52'
- 43. N. 3° 48' 51" W. - 7.52'
- 44. N. 3° 48' 51" W. - 7.52'
- 45. N. 3° 48' 51" W. - 7.52'
- 46. N. 3° 48' 51" W. - 7.52'
- 47. N. 3° 48' 51" W. - 7.52'
- 48. N. 3° 48' 51" W. - 7.52'
- 49. N. 3° 48' 51" W. - 7.52'
- 50. N. 3° 48' 51" W. - 7.52'
- 51. N. 3° 48' 51" W. - 7.52'
- 52. N. 3° 48' 51" W. - 7.52'
- 53. N. 3° 48' 51" W. - 7.52'
- 54. N. 3° 48' 51" W. - 7.52'
- 55. N. 3° 48' 51" W. - 7.52'
- 56. N. 3° 48' 51" W. - 7.52'
- 57. N. 3° 48' 51" W. - 7.52'
- 58. N. 3° 48' 51" W. - 7.52'
- 59. N. 3° 48' 51" W. - 7.52'
- 60. N. 3° 48' 51" W. - 7.52'
- 61. N. 3° 48' 51" W. - 7.52'
- 62. N. 3° 48' 51" W. - 7.52'
- 63. N. 3° 48' 51" W. - 7.52'
- 64. N. 3° 48' 51" W. - 7.52'
- 65. N. 3° 48' 51" W. - 7.52'
- 66. N. 3° 48' 51" W. - 7.52'
- 67. N. 3° 48' 51" W. - 7.52'
- 68. N. 3° 48' 51" W. - 7.52'
- 69. N. 3° 48' 51" W. - 7.52'
- 70. N. 3° 48' 51" W. - 7.52'
- 71. N. 3° 48' 51" W. - 7.52'
- 72. N. 3° 48' 51" W. - 7.52'
- 73. N. 3° 48' 51" W. - 7.52'
- 74. N. 3° 48' 51" W. - 7.52'
- 75. N. 3° 48' 51" W. - 7.52'
- 76. N. 3° 48' 51" W. - 7.52'
- 77. N. 3° 48' 51" W. - 7.52'
- 78. N. 3° 48' 51" W. - 7.52'
- 79. N. 3° 48' 51" W. - 7.52'
- 80. N. 3° 48' 51" W. - 7.52'
- 81. N. 3° 48' 51" W. - 7.52'
- 82. N. 3° 48' 51" W. - 7.52'
- 83. N. 3° 48' 51" W. - 7.52'
- 84. N. 3° 48' 51" W. - 7.52'
- 85. N. 3° 48' 51" W. - 7.52'
- 86. N. 3° 48' 51" W. - 7.52'
- 87. N. 3° 48' 51" W. - 7.52'
- 88. N. 3° 48' 51" W. - 7.52'
- 89. N. 3° 48' 51" W. - 7.52'
- 90. N. 3° 48' 51" W. - 7.52'
- 91. N. 3° 48' 51" W. - 7.52'
- 92. N. 3° 48' 51" W. - 7.52'
- 93. N. 3° 48' 51" W. - 7.52'
- 94. N. 3° 48' 51" W. - 7.52'
- 95. N. 3° 48' 51" W. - 7.52'
- 96. N. 3° 48' 51" W. - 7.52'
- 97. N. 3° 48' 51" W. - 7.52'
- 98. N. 3° 48' 51" W. - 7.52'
- 99. N. 3° 48' 51" W. - 7.52'
- 100. N. 3° 48' 51" W. - 7.52'

C134573

MAP RECORDS OF
HARRIS COUNTY, TEXAS
VOL. 130 PAGE 55
R. E. TURRENTINE, JR.,
COUNTY CLERK,
HARRIS COUNTY, TEXAS
NOTTINGHAM FOREST, SEC. 3
THIS IS 1 OF 5 PAGES

AUG-245 657.662 = C 134573 A 70 25.00

MAP RECORDS OF
HARRIS COUNTY, TEXAS
VOLUME 30 PAGE 56
R. E. TURRENTINE, JR.,
COUNTY CLERK
HARRIS COUNTY, TEXAS
NOTTINGHAM FOREST, SEC. 3
THIS IS 1 OF 5 PAGES

relate respectively of Kickerillo Development Company, owner of the property subdivided in the above and foregoing map of Nottingham Forest, Section 3, do hereby make subdivision Company, according to the lines, streets, lots, alleys, parks, building lines, and easements thereon shown and designate said subdivision as Nottingham Forest, Section 3, located in the County of Harris, State of Texas, and do hereby certify that the same is for public use, as such, the streets, alleys, parks, and easements shown thereon forever; and do hereby waive any claims for the streets and alleys dedicated, or occasioned by the alteration of the surface of any portion of streets or alleys to such grades; and do hereby bind ourselves, heirs, assigns, and successors, to the land so dedicated.

James, President and Secretary respectively of Kickerillo Development Company, owner of the property subdivided in the above and foregoing map of Nottingham Forest, Section 3, have executed and signed this instrument of record in Volume 5232, page 136, and Volume 5236, page 603, of the public records of Harris County, Texas, and we hereby confirm that we are the present owners of said lands and have not assigned the same nor any part thereof. We subdivide and dedicate to public use, as such, the streets, alleys, parks, and easements shown thereon forever; and do hereby bind ourselves, heirs, assigns, and successors, to the land so dedicated.

sement five (5) feet wide from a plane twenty (20) feet above the ground upward, located adjacent to all easements shown hereon.

of land fifteen (15) feet wide on each side of the center line of any and all gullies, ravines, draws, sloughs, or other natural drainage courses located in said subdivision, as other public agency the right to enter upon said easements at any and all times for the purpose of construction and/or maintaining drainage work and/or structures.

going map shall be restricted in its use, which restrictions shall run with the title to the property, and shall be enforceable, at the option of Harris County, by Harris County

other public ditches, either directly or indirectly, is strictly prohibited.
net drainage opening of sufficient size to permit the free flow of water without backwater, and shall be a minimum of one and three quarters (1 3/4) square feet (18" diameter) and/or walk.

ries of this subdivision are for residential purposes unless otherwise noted.

Harris County and or any property owner that utility easements shown on acreage are hereby established as shown.

caused these presents to be signed by Vincent D. Kickerillo, its President, thereunto authorized, attested, by its Secretary, Naomi Jones, and its common seal hereunto affixed

MARK
KICKERILLO DEVELOPMENT COMPANY
Vice-President
President
Naomi Jones
Secretary



This is to certify that we, C. F. Teller and John J. Pepe, registered engineers of the State of Texas, have platted the above subdivision from an actual survey on the ground; and that all block corners, angle points, and points of curve are properly marked with iron rods (5/8" x 3' long), and that this plat correctly represents that survey made by us.

C. F. TELLER
Notary Public
Texas Reg. No. 2382

John J. Pepe
Notary Public
Texas Reg. No. 11141

appeared Vincent D. Kickerillo, President, and Naomi Jones, Secretary, whose names are subscribed to the foregoing instrument, and in consideration thereof expressed, and in full satisfaction of all claims and demands, to the effect of the act and deed.

WAL OF OFFICE, this 30 day of June, 1965.

WAL OF OFFICE, this 30 day of June, 1965.

appeared J. H. MacLaughlin, President, and Robert W. Carey, Secretary, whose names are subscribed to the foregoing instrument, and in consideration thereof expressed, and in full satisfaction of all claims and demands, to the effect of the act and deed.

WAL OF OFFICE, this 30 day of June, 1965.

WAL OF OFFICE, this 30 day of June, 1965.

This is to certify that the City Planning Commission of the City of Houston, Texas, has approved this plat and subdivision of Nottingham Forest, Section 3, as shown hereon.

IN TESTIMONY WHEREOF, witness the official signatures of the Chairman and Secretary of the City Planning Commission of the City of Houston, Texas, this 29 day of July, 1965.

Roscoe H. Hynes
Secretary-Engineer

John J. Pepe
Vice Chairman

I, Richard P. Deas, County Engineer of Harris County, do hereby certify that the plat of this subdivision complies with all of the existing rules and regulations of this office as adopted by the Harris County Commissioners' Court; and further, that it complies or will comply with all of the laws included in the Harris County Road Law, also including Section 31-C as amended by House Bill 389, Acts of 1959, 56th Legislature.

Richard P. Deas
County Engineer

I, Thomas R. Langford, Jr., Flood Control Engineer of Harris County Flood Control District, Harris County, Texas, do hereby certify that the plat of this subdivision complies with requirements for internal subdivision drainage as adopted by Commissioners' Court; however, no certification is hereby given as to the effect of drainage from this subdivision on the intercepting drainage artery or parent stream, or on any other area or subdivision within in the water shed.

Thomas R. Langford, Jr.
Flood Control Engineer

APPROVED by the Commissioners' Court of Harris County, Texas, this 29 day of July, 1965.

W. E. Chapman
Commissioner, Precinct 1

R. E. Jones
Commissioner, Precinct 3

R. E. Jones
Commissioner, Precinct 4

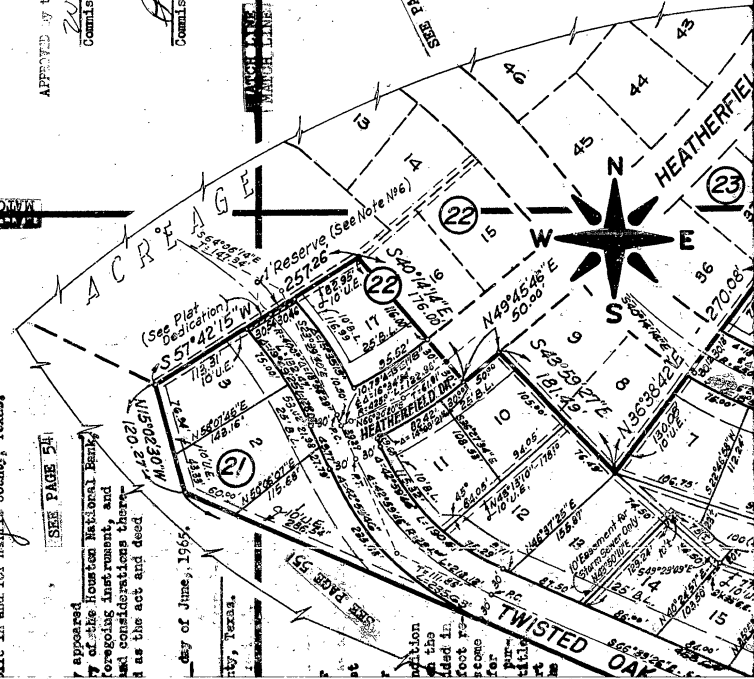
STATE OF TEXAS
COUNTY OF HARRIS

I, R. E. Turrentine, Jr., Clerk of the County Court of Harris County, Texas, do hereby certify that the within instrument with its certificate of authentication was filed for registration in my office on August 2, 1965, at 3:56 o'clock P. M., and duly recorded on August 3, 1965, at 9:00 o'clock P. M. Vol. 130, page 53, of record of MAPS of said County.

WITNESS my hand and seal of office, at Houston, the day and date last above written.

R. E. Turrentine, Jr., Clerk, County Court of Harris County, Texas
THIS CERTIFICATE IS VALID ONLY AS TO THE INSTRUMENT ON WHICH THE ORIGINAL SIGNATURE WAS MADE, AND THEN TO THE EXTENT OF SUCH INSTRUMENT IS NOT ALTERED OR CHANGED AFTER RECORDING.

NOTTINGHAM
SECTION 3
SUBDIVISION OF
WILLIAM HARD
HARRIS COUNTY
8 BLOCK
KICKERILLO DEVELOPMENT COMPANY
VINCENT D. KICKERILLO
TELLER
CONSULTING
HOUSTON, TEXAS
WILLIAMS &
LAND PLANNING
HOUSTON, TEXAS
SCALE: 1" = 40'



APPROVE BY THE COMMISSIONER'S COURT OF HARRIS COUNTY, TEXAS, THIS 27th DAY OF JUNE 1966

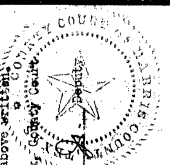
APPROVE BY THE COMMISSIONER'S COURT OF HARRIS COUNTY, TEXAS, THIS 27th DAY OF JUNE 1966

APPROVE BY THE COMMISSIONER'S COURT OF HARRIS COUNTY, TEXAS, THIS 27th DAY OF JUNE 1966

STATE OF TEXAS
COUNTY OF HARRIS

I, R. E. Turrentine, Jr., Clerk of the County Court of Harris County, Texas, do hereby certify that the within instrument with its certificate of authentication was filed for registration in my office on August 1, 1966, at 3:54 o'clock P. M., and only recorded on August 2, 1966, at 1:00 o'clock P. M., Vol. 130, page 53, of record of MAPS of said County.

WITNESS my hand and seal of office, at Houston, the day and date last above written.



MAP RECORDS OF
HARRIS COUNTY, TEXAS
VOL. 130, PAGE 53
R. E. TURRENTINE, JR.,
COUNTY CLERK
HARRIS COUNTY, TEXAS
NOTTINGHAM FOREST, SEC. 3
THIS IS 1 OF 5 PAGES

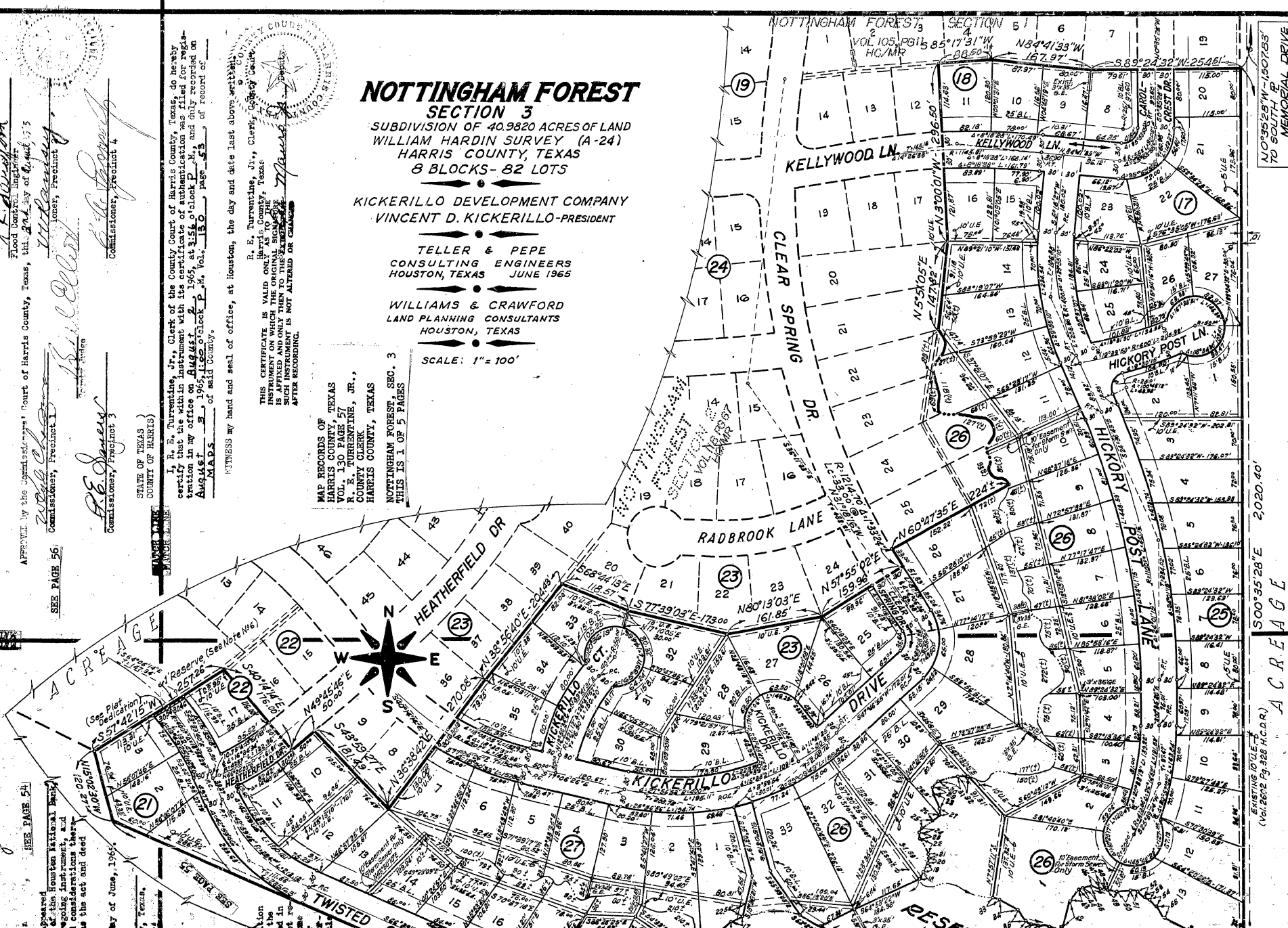
NOTTINGHAM FOREST SECTION 3 SUBDIVISION OF 40.9820 ACRES OF LAND WILLIAM HARDIN SURVEY (A-24) HARRIS COUNTY, TEXAS 8 BLOCKS - 82 LOTS

KICKERILLO DEVELOPMENT COMPANY
VINCENT D. KICKERILLO - PRESIDENT

TELLER & PEPE
CONSULTING ENGINEERS
HOUSTON, TEXAS JUNE 1966

WILLIAMS & CRAWFORD
LAND PLANNING CONSULTANTS
HOUSTON, TEXAS

SCALE: 1" = 100'



N 0° 35' 29" W - 1307.83'
TO SOUTH 2
MEMORIAL DRIVE

S 00° 35' 28" E 2020.40'
ACREAGE
(Vol. 2612 Pg. 358 H.C.A.R.)
EXISTING 10' U.L.E. -