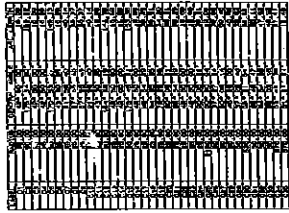


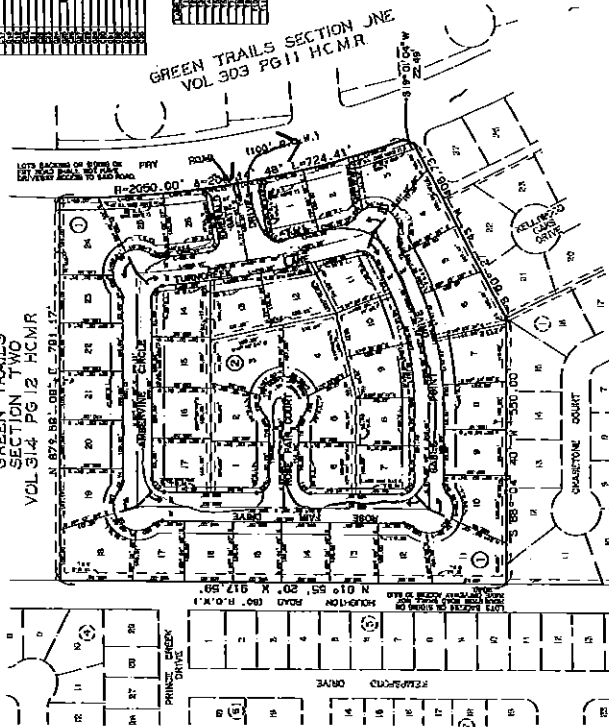
Vicinity Map  
Page 1000

1. The property is situated in the vicinity of the following roads: [List of roads and distances]



GREEN TRAILS SECTION ONE  
VOL 303 PG 11 HCMR

GREEN TRAILS SECTION TWO  
VOL 314 PG 12 HCMR



NOTTINGHAM COUNTRY SECTION FOUR  
VOL 234 PG 62 HCMR

# KELLIWOOD

## SECTION 4

A SUBDIVISION OF 17,1565 ACRES OF LAND  
CONTAINING 43 LOTS IN 2 BLOCKS

H.T. & B.R.R. COMPANY SURVEY A-380

SECOND KELLIWOOD LTD  
A TRUST, LIMITED PARTNERSHIP  
TRAC, INC GENERAL PARTNER

1. The property is situated in the vicinity of the following roads: [List of roads and distances]

17942574

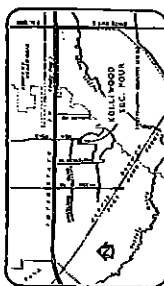
200 1 500 1000



SPRINT OF  
COUNTY CLERK'S OFFICE  
AND RECORDS OF COUNTY CLERK  
VOL. 1  
PAGE 1

THIS IS THE FIRST PAGE OF THE

RECORDS OF THE COUNTY CLERK'S OFFICE

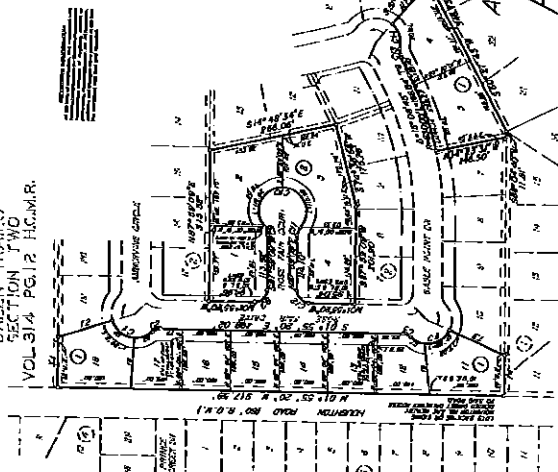


VICINITY MAP  
1/2 MILES

**GENERAL NOTES**

1. "S.L." INDICATES MEASURE LINE.
2. "S.L." INDICATES MEASURE LINE.
3. "S.L." INDICATES MEASURE LINE.
4. "S.L." INDICATES MEASURE LINE.
5. "S.L." INDICATES MEASURE LINE.
6. "S.L." INDICATES MEASURE LINE.
7. "S.L." INDICATES MEASURE LINE.
8. "S.L." INDICATES MEASURE LINE.
9. "S.L." INDICATES MEASURE LINE.
10. "S.L." INDICATES MEASURE LINE.
11. "S.L." INDICATES MEASURE LINE.
12. "S.L." INDICATES MEASURE LINE.
13. "S.L." INDICATES MEASURE LINE.
14. "S.L." INDICATES MEASURE LINE.
15. "S.L." INDICATES MEASURE LINE.
16. "S.L." INDICATES MEASURE LINE.
17. "S.L." INDICATES MEASURE LINE.
18. "S.L." INDICATES MEASURE LINE.
19. "S.L." INDICATES MEASURE LINE.
20. "S.L." INDICATES MEASURE LINE.
21. "S.L." INDICATES MEASURE LINE.
22. "S.L." INDICATES MEASURE LINE.
23. "S.L." INDICATES MEASURE LINE.
24. "S.L." INDICATES MEASURE LINE.
25. "S.L." INDICATES MEASURE LINE.
26. "S.L." INDICATES MEASURE LINE.
27. "S.L." INDICATES MEASURE LINE.
28. "S.L." INDICATES MEASURE LINE.
29. "S.L." INDICATES MEASURE LINE.
30. "S.L." INDICATES MEASURE LINE.
31. "S.L." INDICATES MEASURE LINE.
32. "S.L." INDICATES MEASURE LINE.
33. "S.L." INDICATES MEASURE LINE.
34. "S.L." INDICATES MEASURE LINE.
35. "S.L." INDICATES MEASURE LINE.
36. "S.L." INDICATES MEASURE LINE.
37. "S.L." INDICATES MEASURE LINE.
38. "S.L." INDICATES MEASURE LINE.
39. "S.L." INDICATES MEASURE LINE.
40. "S.L." INDICATES MEASURE LINE.
41. "S.L." INDICATES MEASURE LINE.
42. "S.L." INDICATES MEASURE LINE.
43. "S.L." INDICATES MEASURE LINE.
44. "S.L." INDICATES MEASURE LINE.
45. "S.L." INDICATES MEASURE LINE.
46. "S.L." INDICATES MEASURE LINE.
47. "S.L." INDICATES MEASURE LINE.
48. "S.L." INDICATES MEASURE LINE.
49. "S.L." INDICATES MEASURE LINE.
50. "S.L." INDICATES MEASURE LINE.
51. "S.L." INDICATES MEASURE LINE.
52. "S.L." INDICATES MEASURE LINE.
53. "S.L." INDICATES MEASURE LINE.
54. "S.L." INDICATES MEASURE LINE.
55. "S.L." INDICATES MEASURE LINE.
56. "S.L." INDICATES MEASURE LINE.
57. "S.L." INDICATES MEASURE LINE.
58. "S.L." INDICATES MEASURE LINE.
59. "S.L." INDICATES MEASURE LINE.
60. "S.L." INDICATES MEASURE LINE.
61. "S.L." INDICATES MEASURE LINE.
62. "S.L." INDICATES MEASURE LINE.
63. "S.L." INDICATES MEASURE LINE.
64. "S.L." INDICATES MEASURE LINE.
65. "S.L." INDICATES MEASURE LINE.
66. "S.L." INDICATES MEASURE LINE.
67. "S.L." INDICATES MEASURE LINE.
68. "S.L." INDICATES MEASURE LINE.
69. "S.L." INDICATES MEASURE LINE.
70. "S.L." INDICATES MEASURE LINE.
71. "S.L." INDICATES MEASURE LINE.
72. "S.L." INDICATES MEASURE LINE.
73. "S.L." INDICATES MEASURE LINE.
74. "S.L." INDICATES MEASURE LINE.
75. "S.L." INDICATES MEASURE LINE.
76. "S.L." INDICATES MEASURE LINE.
77. "S.L." INDICATES MEASURE LINE.
78. "S.L." INDICATES MEASURE LINE.
79. "S.L." INDICATES MEASURE LINE.
80. "S.L." INDICATES MEASURE LINE.
81. "S.L." INDICATES MEASURE LINE.
82. "S.L." INDICATES MEASURE LINE.
83. "S.L." INDICATES MEASURE LINE.
84. "S.L." INDICATES MEASURE LINE.
85. "S.L." INDICATES MEASURE LINE.
86. "S.L." INDICATES MEASURE LINE.
87. "S.L." INDICATES MEASURE LINE.
88. "S.L." INDICATES MEASURE LINE.
89. "S.L." INDICATES MEASURE LINE.
90. "S.L." INDICATES MEASURE LINE.
91. "S.L." INDICATES MEASURE LINE.
92. "S.L." INDICATES MEASURE LINE.
93. "S.L." INDICATES MEASURE LINE.
94. "S.L." INDICATES MEASURE LINE.
95. "S.L." INDICATES MEASURE LINE.
96. "S.L." INDICATES MEASURE LINE.
97. "S.L." INDICATES MEASURE LINE.
98. "S.L." INDICATES MEASURE LINE.
99. "S.L." INDICATES MEASURE LINE.
100. "S.L." INDICATES MEASURE LINE.

GREEN TRAILS  
SECTION TWO  
VOL. 314 PG. 12 H.C.M.R.



NOTTINGHAM COUNTRY SECTION FOUR  
VOL. 234 PG. 02 H.C.M.R.

KELLWOOD IN  
NOTTINGHAM COUNTRY  
SECTION ONE  
VOL. 311 PG. 15 H.C.M.R.

# A PARTIAL REPLAT OF KELLWOOD

## SECTION 4

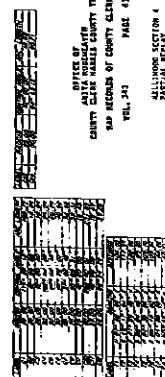
AS RECORDED IN VOL. 341 PG. 50 H.C.M.R.  
(REPLATING LOTS 14-18 IN BLOCK 1 TO INCREASE THE A.C. TO 6.0 A.C. TO 10.0 A.C. & B.L. LOTS 19-24 IN BLOCK 1 TO INCREASE LOT SIZES & LOTS 1-14 IN BLOCK 2 TO INCREASE LOT SIZES  
BEING 5.381 ACRES OF LAND  
CONTAINING 14 LOTS IN 2 BLOCKS

103177 IN THE  
H.T. & G.R.R. COMPANY SURVEY, A-380  
HARRIS COUNTY, TEXAS

OFFICE OF  
CLERK OF HARRIS COUNTY TEXAS  
300 BEAVER OF COUNTY CLERK  
TEL. 241 PAGE 41

SECOND KELLWOOD LTD.  
A TEXAS LIMITED PARTNERSHIP  
FAC, INC. GENERAL PARTNER  
WOODWAY II CORPORATION  
A TEXAS CORPORATION

PREPARED BY  
JOHN J. REBE CONSULTING ENGINEERS, INC.  
2025 BRIDGEMAN SUITE 201 HOUSTON, TEXAS 77004  
SCALE: 1" = 100' 1/4" = 100' 1/4" = 100'



NOTTINGHAM COUNTRY SECTION FOUR  
VOL. 234 PG. 02 H.C.M.R.

GREEN TRAILS  
SECTION TWO  
VOL. 314 PG. 12 H.C.M.R.

KELLWOOD IN  
NOTTINGHAM COUNTRY  
SECTION ONE  
VOL. 311 PG. 15 H.C.M.R.

AS RECORDED IN VOL. 341 PG. 50 H.C.M.R.  
(REPLATING LOTS 14-18 IN BLOCK 1 TO INCREASE THE A.C. TO 6.0 A.C. TO 10.0 A.C. & B.L. LOTS 19-24 IN BLOCK 1 TO INCREASE LOT SIZES & LOTS 1-14 IN BLOCK 2 TO INCREASE LOT SIZES  
BEING 5.381 ACRES OF LAND  
CONTAINING 14 LOTS IN 2 BLOCKS

103177 IN THE  
H.T. & G.R.R. COMPANY SURVEY, A-380  
HARRIS COUNTY, TEXAS

OFFICE OF  
CLERK OF HARRIS COUNTY TEXAS  
300 BEAVER OF COUNTY CLERK  
TEL. 241 PAGE 41

SECOND KELLWOOD LTD.  
A TEXAS LIMITED PARTNERSHIP  
FAC, INC. GENERAL PARTNER  
WOODWAY II CORPORATION  
A TEXAS CORPORATION

PREPARED BY  
JOHN J. REBE CONSULTING ENGINEERS, INC.  
2025 BRIDGEMAN SUITE 201 HOUSTON, TEXAS 77004  
SCALE: 1" = 100' 1/4" = 100' 1/4" = 100'

NOTTINGHAM COUNTRY SECTION FOUR  
VOL. 234 PG. 02 H.C.M.R.

GREEN TRAILS  
SECTION TWO  
VOL. 314 PG. 12 H.C.M.R.

KELLWOOD IN  
NOTTINGHAM COUNTRY  
SECTION ONE  
VOL. 311 PG. 15 H.C.M.R.

AS RECORDED IN VOL. 341 PG. 50 H.C.M.R.  
(REPLATING LOTS 14-18 IN BLOCK 1 TO INCREASE THE A.C. TO 6.0 A.C. TO 10.0 A.C. & B.L. LOTS 19-24 IN BLOCK 1 TO INCREASE LOT SIZES & LOTS 1-14 IN BLOCK 2 TO INCREASE LOT SIZES  
BEING 5.381 ACRES OF LAND  
CONTAINING 14 LOTS IN 2 BLOCKS

103177 IN THE  
H.T. & G.R.R. COMPANY SURVEY, A-380  
HARRIS COUNTY, TEXAS

OFFICE OF  
CLERK OF HARRIS COUNTY TEXAS  
300 BEAVER OF COUNTY CLERK  
TEL. 241 PAGE 41

SECOND KELLWOOD LTD.  
A TEXAS LIMITED PARTNERSHIP  
FAC, INC. GENERAL PARTNER  
WOODWAY II CORPORATION  
A TEXAS CORPORATION

PREPARED BY  
JOHN J. REBE CONSULTING ENGINEERS, INC.  
2025 BRIDGEMAN SUITE 201 HOUSTON, TEXAS 77004  
SCALE: 1" = 100' 1/4" = 100' 1/4" = 100'