

STATE OF TEXAS  
COUNTY OF HARRIS

BEFORE ME, the undersigned authority, on this day personally appeared **Walter H. Hines, Jr.**, known to me to be the person whose name is subscribed to the foregoing instrument, and acknowledged to me that he executed the same for the purposes and consideration therein expressed.

My commission expires on **10/10/2005**.

WITNESSES my hand and seal of office on this day of **March**, 2005.

Notary Public in and for the State of Texas  
My commission expires on **10/10/2005**

WITNESSES my hand and seal of office on this day of **March**, 2005.

Notary Public in and for the State of Texas  
My commission expires on **10/10/2005**

WITNESSES my hand and seal of office on this day of **March**, 2005.

Notary Public in and for the State of Texas  
My commission expires on **10/10/2005**

WITNESSES my hand and seal of office on this day of **March**, 2005.

Notary Public in and for the State of Texas  
My commission expires on **10/10/2005**

WITNESSES my hand and seal of office on this day of **March**, 2005.

Notary Public in and for the State of Texas  
My commission expires on **10/10/2005**

WITNESSES my hand and seal of office on this day of **March**, 2005.

Notary Public in and for the State of Texas  
My commission expires on **10/10/2005**

WITNESSES my hand and seal of office on this day of **March**, 2005.

Notary Public in and for the State of Texas  
My commission expires on **10/10/2005**

WITNESSES my hand and seal of office on this day of **March**, 2005.

Notary Public in and for the State of Texas  
My commission expires on **10/10/2005**

WITNESSES my hand and seal of office on this day of **March**, 2005.

Notary Public in and for the State of Texas  
My commission expires on **10/10/2005**

WITNESSES my hand and seal of office on this day of **March**, 2005.

Notary Public in and for the State of Texas  
My commission expires on **10/10/2005**

WITNESSES my hand and seal of office on this day of **March**, 2005.

Notary Public in and for the State of Texas  
My commission expires on **10/10/2005**

WITNESSES my hand and seal of office on this day of **March**, 2005.

Notary Public in and for the State of Texas  
My commission expires on **10/10/2005**

WITNESSES my hand and seal of office on this day of **March**, 2005.

Notary Public in and for the State of Texas  
My commission expires on **10/10/2005**

321.543 ACRES  
MEADOWS DEVELOPMENT, L.P.  
ACRES IN HARRIS

321.543 ACRES  
MEADOWS DEVELOPMENT, L.P.  
ACRES IN HARRIS

321.543 ACRES  
MEADOWS DEVELOPMENT, L.P.  
ACRES IN HARRIS

321.543 ACRES  
MEADOWS DEVELOPMENT, L.P.  
ACRES IN HARRIS

321.543 ACRES  
MEADOWS DEVELOPMENT, L.P.  
ACRES IN HARRIS

321.543 ACRES  
MEADOWS DEVELOPMENT, L.P.  
ACRES IN HARRIS

321.543 ACRES  
MEADOWS DEVELOPMENT, L.P.  
ACRES IN HARRIS

321.543 ACRES  
MEADOWS DEVELOPMENT, L.P.  
ACRES IN HARRIS

321.543 ACRES  
MEADOWS DEVELOPMENT, L.P.  
ACRES IN HARRIS

321.543 ACRES  
MEADOWS DEVELOPMENT, L.P.  
ACRES IN HARRIS

321.543 ACRES  
MEADOWS DEVELOPMENT, L.P.  
ACRES IN HARRIS

321.543 ACRES  
MEADOWS DEVELOPMENT, L.P.  
ACRES IN HARRIS

321.543 ACRES  
MEADOWS DEVELOPMENT, L.P.  
ACRES IN HARRIS

321.543 ACRES  
MEADOWS DEVELOPMENT, L.P.  
ACRES IN HARRIS

321.543 ACRES  
MEADOWS DEVELOPMENT, L.P.  
ACRES IN HARRIS

321.543 ACRES  
MEADOWS DEVELOPMENT, L.P.  
ACRES IN HARRIS

321.543 ACRES  
MEADOWS DEVELOPMENT, L.P.  
ACRES IN HARRIS

321.543 ACRES  
MEADOWS DEVELOPMENT, L.P.  
ACRES IN HARRIS

321.543 ACRES  
MEADOWS DEVELOPMENT, L.P.  
ACRES IN HARRIS

321.543 ACRES  
MEADOWS DEVELOPMENT, L.P.  
ACRES IN HARRIS

321.543 ACRES  
MEADOWS DEVELOPMENT, L.P.  
ACRES IN HARRIS

321.543 ACRES  
MEADOWS DEVELOPMENT, L.P.  
ACRES IN HARRIS

321.543 ACRES  
MEADOWS DEVELOPMENT, L.P.  
ACRES IN HARRIS

321.543 ACRES  
MEADOWS DEVELOPMENT, L.P.  
ACRES IN HARRIS

321.543 ACRES  
MEADOWS DEVELOPMENT, L.P.  
ACRES IN HARRIS

321.543 ACRES  
MEADOWS DEVELOPMENT, L.P.  
ACRES IN HARRIS

321.543 ACRES  
MEADOWS DEVELOPMENT, L.P.  
ACRES IN HARRIS

321.543 ACRES  
MEADOWS DEVELOPMENT, L.P.  
ACRES IN HARRIS

321.543 ACRES  
MEADOWS DEVELOPMENT, L.P.  
ACRES IN HARRIS

321.543 ACRES  
MEADOWS DEVELOPMENT, L.P.  
ACRES IN HARRIS

321.543 ACRES  
MEADOWS DEVELOPMENT, L.P.  
ACRES IN HARRIS

321.543 ACRES  
MEADOWS DEVELOPMENT, L.P.  
ACRES IN HARRIS

321.543 ACRES  
MEADOWS DEVELOPMENT, L.P.  
ACRES IN HARRIS

321.543 ACRES  
MEADOWS DEVELOPMENT, L.P.  
ACRES IN HARRIS

321.543 ACRES  
MEADOWS DEVELOPMENT, L.P.  
ACRES IN HARRIS

321.543 ACRES  
MEADOWS DEVELOPMENT, L.P.  
ACRES IN HARRIS

321.543 ACRES  
MEADOWS DEVELOPMENT, L.P.  
ACRES IN HARRIS

321.543 ACRES  
MEADOWS DEVELOPMENT, L.P.  
ACRES IN HARRIS

321.543 ACRES  
MEADOWS DEVELOPMENT, L.P.  
ACRES IN HARRIS

321.543 ACRES  
MEADOWS DEVELOPMENT, L.P.  
ACRES IN HARRIS

321.543 ACRES  
MEADOWS DEVELOPMENT, L.P.  
ACRES IN HARRIS

321.543 ACRES  
MEADOWS DEVELOPMENT, L.P.  
ACRES IN HARRIS

321.543 ACRES  
MEADOWS DEVELOPMENT, L.P.  
ACRES IN HARRIS

321.543 ACRES  
MEADOWS DEVELOPMENT, L.P.  
ACRES IN HARRIS

321.543 ACRES  
MEADOWS DEVELOPMENT, L.P.  
ACRES IN HARRIS

321.543 ACRES  
MEADOWS DEVELOPMENT, L.P.  
ACRES IN HARRIS

321.543 ACRES  
MEADOWS DEVELOPMENT, L.P.  
ACRES IN HARRIS

321.543 ACRES  
MEADOWS DEVELOPMENT, L.P.  
ACRES IN HARRIS

321.543 ACRES  
MEADOWS DEVELOPMENT, L.P.  
ACRES IN HARRIS

321.543 ACRES  
MEADOWS DEVELOPMENT, L.P.  
ACRES IN HARRIS

321.543 ACRES  
MEADOWS DEVELOPMENT, L.P.  
ACRES IN HARRIS

321.543 ACRES  
MEADOWS DEVELOPMENT, L.P.  
ACRES IN HARRIS

321.543 ACRES  
MEADOWS DEVELOPMENT, L.P.  
ACRES IN HARRIS

321.543 ACRES  
MEADOWS DEVELOPMENT, L.P.  
ACRES IN HARRIS

321.543 ACRES  
MEADOWS DEVELOPMENT, L.P.  
ACRES IN HARRIS

321.543 ACRES  
MEADOWS DEVELOPMENT, L.P.  
ACRES IN HARRIS

321.543 ACRES  
MEADOWS DEVELOPMENT, L.P.  
ACRES IN HARRIS

321.543 ACRES  
MEADOWS DEVELOPMENT, L.P.  
ACRES IN HARRIS

321.543 ACRES  
MEADOWS DEVELOPMENT, L.P.  
ACRES IN HARRIS

321.543 ACRES  
MEADOWS DEVELOPMENT, L.P.  
ACRES IN HARRIS

321.543 ACRES  
MEADOWS DEVELOPMENT, L.P.  
ACRES IN HARRIS

321.543 ACRES  
MEADOWS DEVELOPMENT, L.P.  
ACRES IN HARRIS

321.543 ACRES  
MEADOWS DEVELOPMENT, L.P.  
ACRES IN HARRIS

321.543 ACRES  
MEADOWS DEVELOPMENT, L.P.  
ACRES IN HARRIS

321.543 ACRES  
MEADOWS DEVELOPMENT, L.P.  
ACRES IN HARRIS

321.543 ACRES  
MEADOWS DEVELOPMENT, L.P.  
ACRES IN HARRIS

321.543 ACRES  
MEADOWS DEVELOPMENT, L.P.  
ACRES IN HARRIS

321.543 ACRES  
MEADOWS DEVELOPMENT, L.P.  
ACRES IN HARRIS

321.543 ACRES  
MEADOWS DEVELOPMENT, L.P.  
ACRES IN HARRIS

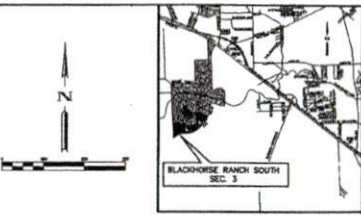
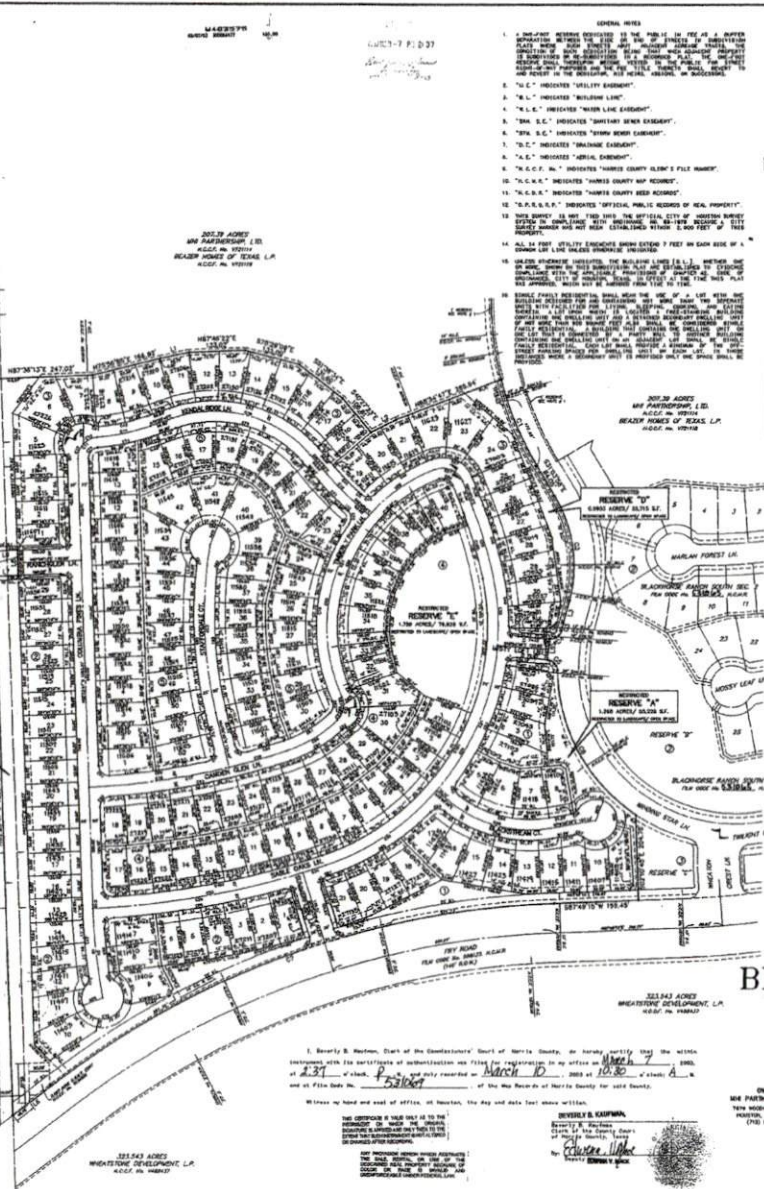
321.543 ACRES  
MEADOWS DEVELOPMENT, L.P.  
ACRES IN HARRIS

321.543 ACRES  
MEADOWS DEVELOPMENT, L.P.  
ACRES IN HARRIS

321.543 ACRES  
MEADOWS DEVELOPMENT, L.P.  
ACRES IN HARRIS

321.543 ACRES  
MEADOWS DEVELOPMENT, L.P.  
ACRES IN HARRIS

321.543 ACRES  
MEADOWS DEVELOPMENT, L.P.  
ACRES IN HARRIS



LOT	ACRES	OWNER
1	0.10	WALTER H. HINES, JR.
2	0.10	WALTER H. HINES, JR.
3	0.10	WALTER H. HINES, JR.
4	0.10	WALTER H. HINES, JR.
5	0.10	WALTER H. HINES, JR.
6	0.10	WALTER H. HINES, JR.
7	0.10	WALTER H. HINES, JR.
8	0.10	WALTER H. HINES, JR.
9	0.10	WALTER H. HINES, JR.
10	0.10	WALTER H. HINES, JR.
11	0.10	WALTER H. HINES, JR.
12	0.10	WALTER H. HINES, JR.
13	0.10	WALTER H. HINES, JR.
14	0.10	WALTER H. HINES, JR.
15	0.10	WALTER H. HINES, JR.
16	0.10	WALTER H. HINES, JR.
17	0.10	WALTER H. HINES, JR.
18	0.10	WALTER H. HINES, JR.
19	0.10	WALTER H. HINES, JR.
20	0.10	WALTER H. HINES, JR.
21	0.10	WALTER H. HINES, JR.
22	0.10	WALTER H. HINES, JR.
23	0.10	WALTER H. HINES, JR.
24	0.10	WALTER H. HINES, JR.
25	0.10	WALTER H. HINES, JR.
26	0.10	WALTER H. HINES, JR.
27	0.10	WALTER H. HINES, JR.
28	0.10	WALTER H. HINES, JR.
29	0.10	WALTER H. HINES, JR.
30	0.10	WALTER H. HINES, JR.
31	0.10	WALTER H. HINES, JR.
32	0.10	WALTER H. HINES, JR.
33	0.10	WALTER H. HINES, JR.
34	0.10	WALTER H. HINES, JR.
35	0.10	WALTER H. HINES, JR.
36	0.10	WALTER H. HINES, JR.
37	0.10	WALTER H. HINES, JR.
38	0.10	WALTER H. HINES, JR.
39	0.10	WALTER H. HINES, JR.
40	0.10	WALTER H. HINES, JR.
41	0.10	WALTER H. HINES, JR.
42	0.10	WALTER H. HINES, JR.
43	0.10	WALTER H. HINES, JR.
44	0.10	WALTER H. HINES, JR.
45	0.10	WALTER H. HINES, JR.
46	0.10	WALTER H. HINES, JR.
47	0.10	WALTER H. HINES, JR.
48	0.10	WALTER H. HINES, JR.
49	0.10	WALTER H. HINES, JR.
50	0.10	WALTER H. HINES, JR.
51	0.10	WALTER H. HINES, JR.
52	0.10	WALTER H. HINES, JR.
53	0.10	WALTER H. HINES, JR.
54	0.10	WALTER H. HINES, JR.
55	0.10	WALTER H. HINES, JR.
56	0.10	WALTER H. HINES, JR.
57	0.10	WALTER H. HINES, JR.
58	0.10	WALTER H. HINES, JR.
59	0.10	WALTER H. HINES, JR.
60	0.10	WALTER H. HINES, JR.
61	0.10	WALTER H. HINES, JR.
62	0.10	WALTER H. HINES, JR.
63	0.10	WALTER H. HINES, JR.
64	0.10	WALTER H. HINES, JR.
65	0.10	WALTER H. HINES, JR.
66	0.10	WALTER H. HINES, JR.
67	0.10	WALTER H. HINES, JR.
68	0.10	WALTER H. HINES, JR.
69	0.10	WALTER H. HINES, JR.
70	0.10	WALTER H. HINES, JR.
71	0.10	WALTER H. HINES, JR.
72	0.10	WALTER H. HINES, JR.
73	0.10	WALTER H. HINES, JR.
74	0.10	WALTER H. HINES, JR.
75	0.10	WALTER H. HINES, JR.
76	0.10	WALTER H. HINES, JR.
77	0.10	WALTER H. HINES, JR.
78	0.10	WALTER H. HINES, JR.
79	0.10	WALTER H. HINES, JR.
80	0.10	WALTER H. HINES, JR.
81	0.10	WALTER H. HINES, JR.
82	0.10	WALTER H. HINES, JR.
83	0.10	WALTER H. HINES, JR.
84	0.10	WALTER H. HINES, JR.
85	0.10	WALTER H. HINES, JR.
86	0.10	WALTER H. HINES, JR.
87	0.10	WALTER H. HINES, JR.
88	0.10	WALTER H. HINES, JR.
89	0.10	WALTER H. HINES, JR.
90	0.10	WALTER H. HINES, JR.
91	0.10	WALTER H. HINES, JR.
92	0.10	WALTER H. HINES, JR.
93	0.10	WALTER H. HINES, JR.
94	0.10	WALTER H. HINES, JR.
95	0.10	WALTER H. HINES, JR.
96	0.10	WALTER H. HINES, JR.
97	0.10	WALTER H. HINES, JR.
98	0.10	WALTER H. HINES, JR.
99	0.10	WALTER H. HINES, JR.
100	0.10	WALTER H. HINES, JR.

# BLACKHORSE RANCH SOUTH SEC. 3

A SUBDIVISION OF 44.37 ACRES OF LAND  
OUT OF THE W.C.R.R. COMPANY SURVEY, A-914  
HARRIS COUNTY, TEXAS

OWNER:  
WALTER H. HINES, JR.  
HARRIS COUNTY, TEXAS

LAND PLANNING CONSULTANTS:  
KERRY K. GILBERT & ASSOCIATES, INC.  
HARRIS COUNTY, TEXAS

ENGINEERS & SURVEYORS:  
BROWN & GAY  
HARRIS COUNTY, TEXAS